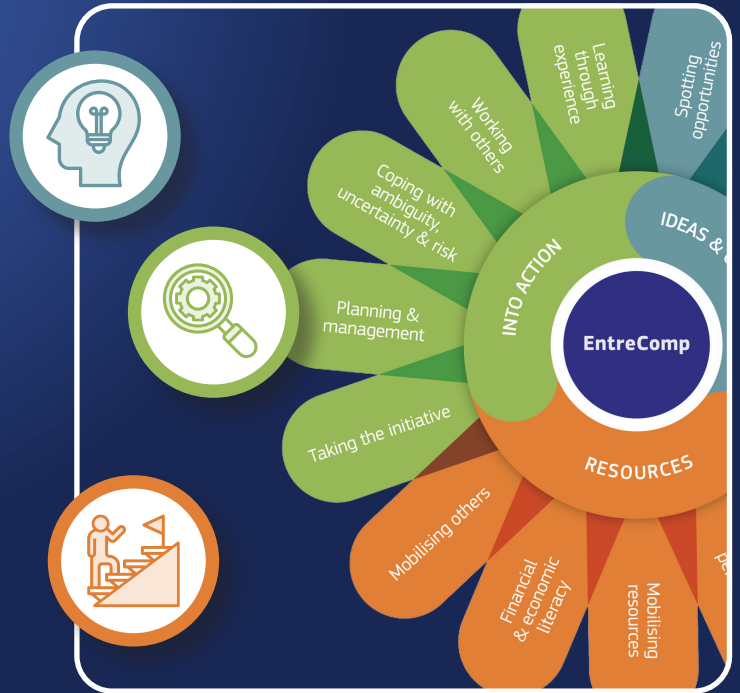


What is it and why should I use it?

Myentrecomp is an online survey tool that has been mapped directly to the European standard **Entrecomp framework**.

The EntreComp Framework, developed by the European Commission, defines entrepreneurship as a set of key competences that can be applied across all areas of life and work. It presents a comprehensive model consisting of 15 competences grouped into three interconnected areas: *Ideas and Opportunities*, *Resources*, and *Into Action*.



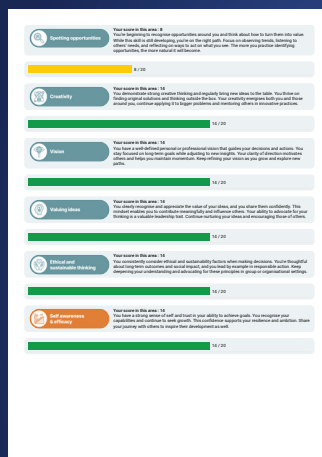
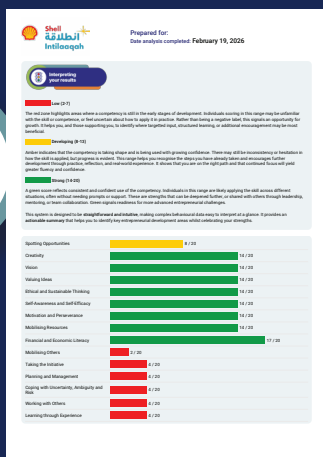
It can be used 'out of the box' with your students to measure their skills and competence against the Entrecomp framework.



Myentrecomp has been developed by **Research Toolkit Limited** (experts in survey design, data capture and analysis).



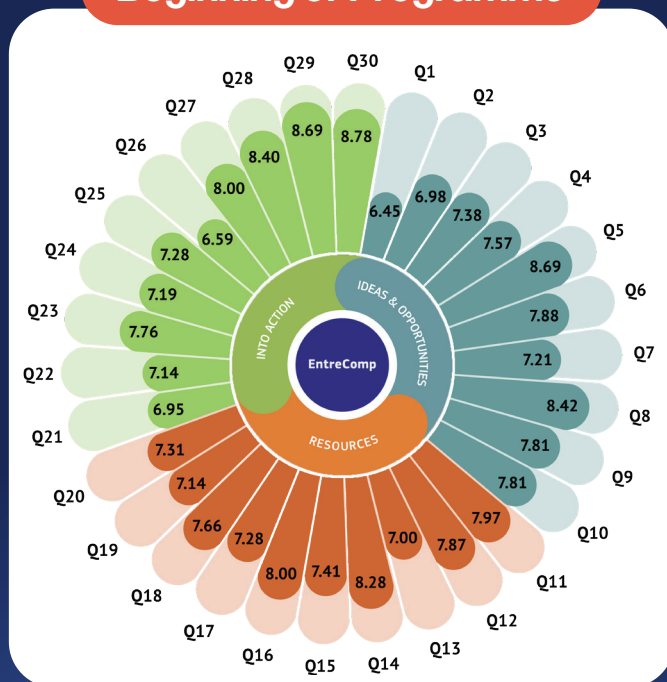
Your students can use the survey free of charge. They'll receive a personalised report each time they complete the survey.



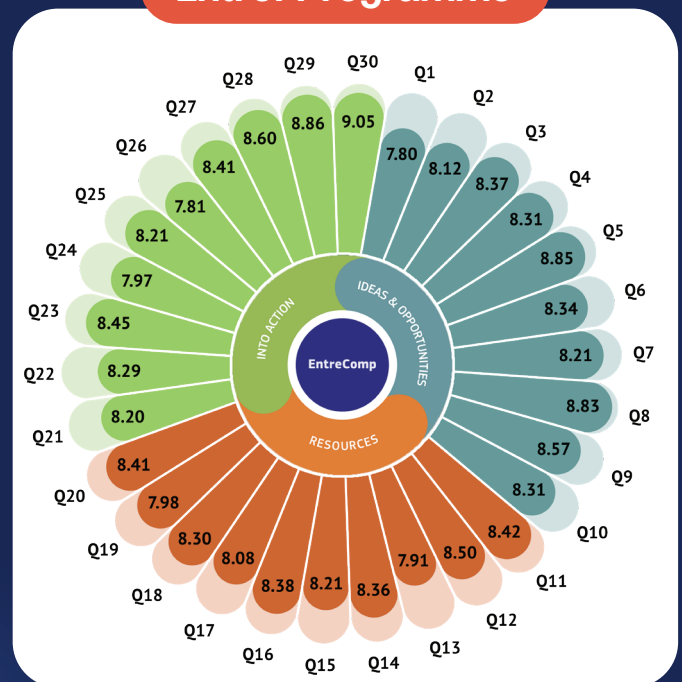
What else can it do?

- 1 We can help you to identify students within your cohort who might be useful targets for focused business start-up support and advice.
- 2 We can identify which students within your cohort might benefit from additional support.
- 3 We can identify students from within your cohort who might demonstrate skills and attributes that could be useful for mentoring or coaching programmes.
- 4 We can produce organisation/institutional meta reports focused around areas of interest.
- 5 We can (following repeat surveys) identify areas of effect or impact of your courses or programmes.

Beginning of Programme



End of Programme



How can I use it?

You ask us for a **programme code** for your students. Then we issue you with a code and your students start using **Myentrecomp survey**, free of charge.

