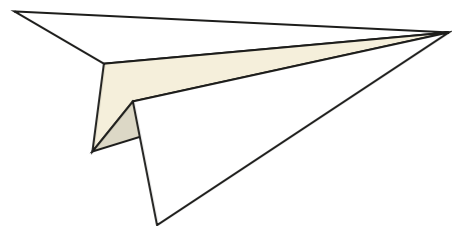


# Furthest Distance

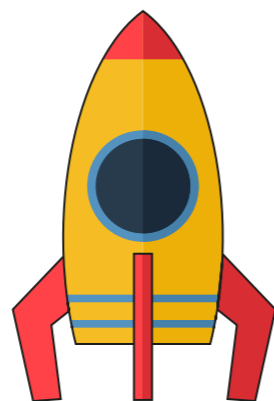
**!** Which of these aircraft can travel fastest? Place a tick in the box of the one that you think can travel the fastest.

**A**



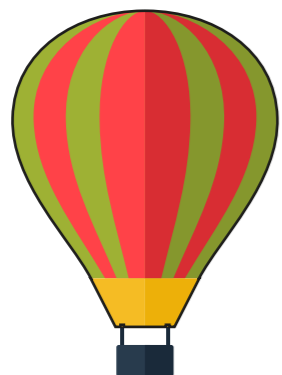
Paper aeroplane

**B**



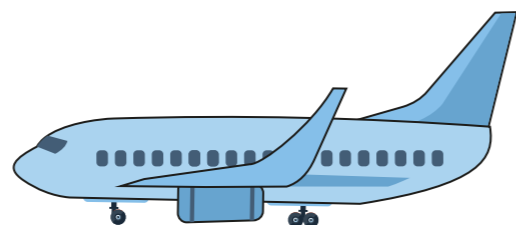
Rocket

**C**

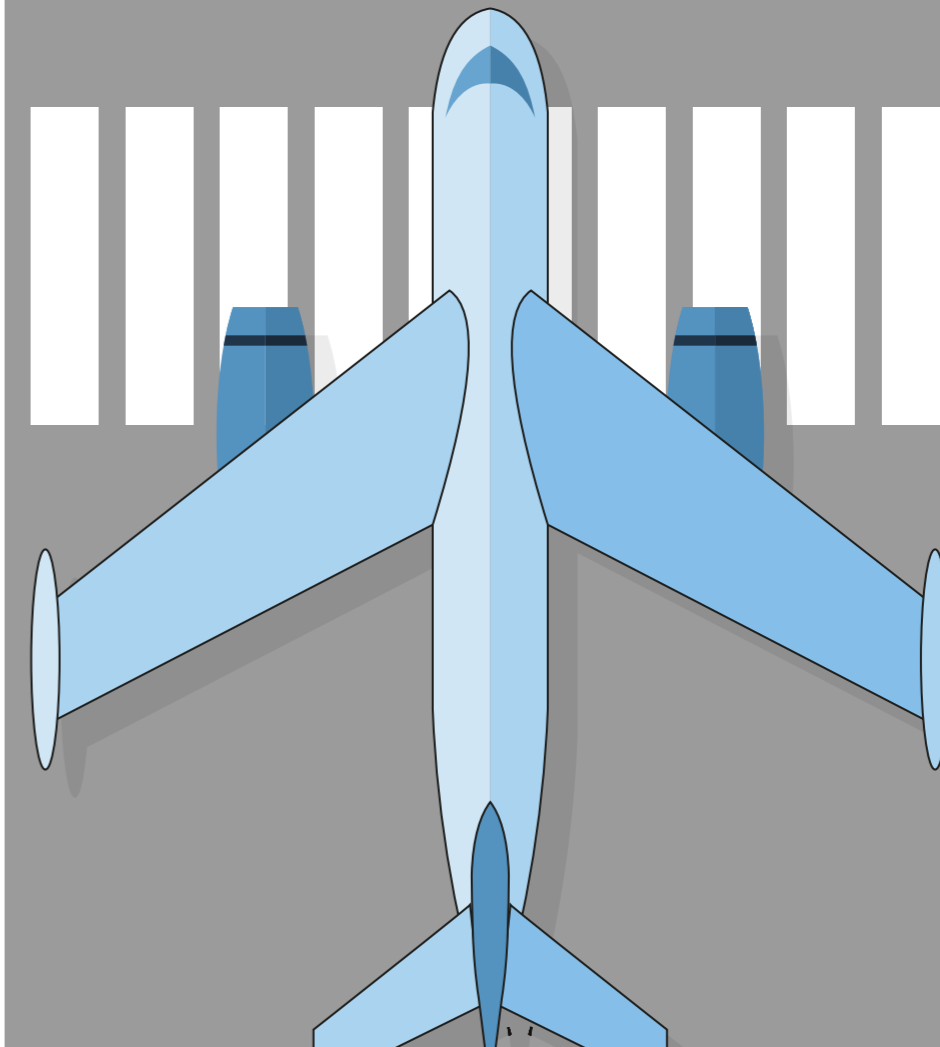


Hot air balloon

**D**



Aeroplane



Can you put them in order (ranging from those that can travel the slowest to those that can travel the fastest).

This can travel the slowest

This can travel a bit faster

This can travel much faster

This can travel the fastest